

This drawing and the design shown are the property of THE PYROCADD COMPANY. The reproduction, copying or other use of this drawing without their written consent is prohibited. 2009 THE PYROCADD COMPANY, LLC

**NEW FIRE ALARM SYSTEM FOR:
ROCKY RIDGE TENANT BLDG.
2470 ROCKY RIDGE ROAD
VESTAVIA HILLS, AL. 35216**

PROJECT NO: 102-20

DATE: 3/27/09

CAD DWG FILE:

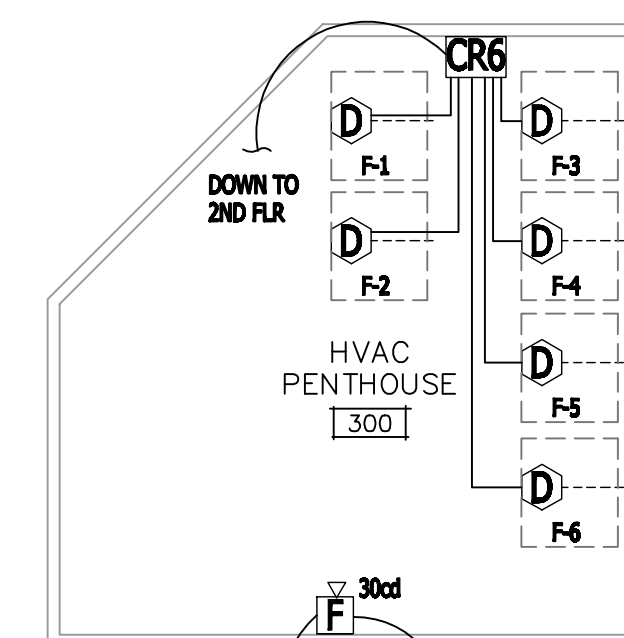
DRWN BY: DWR CHKD BY: DWR

**FIRE
ALARM
PLAN**

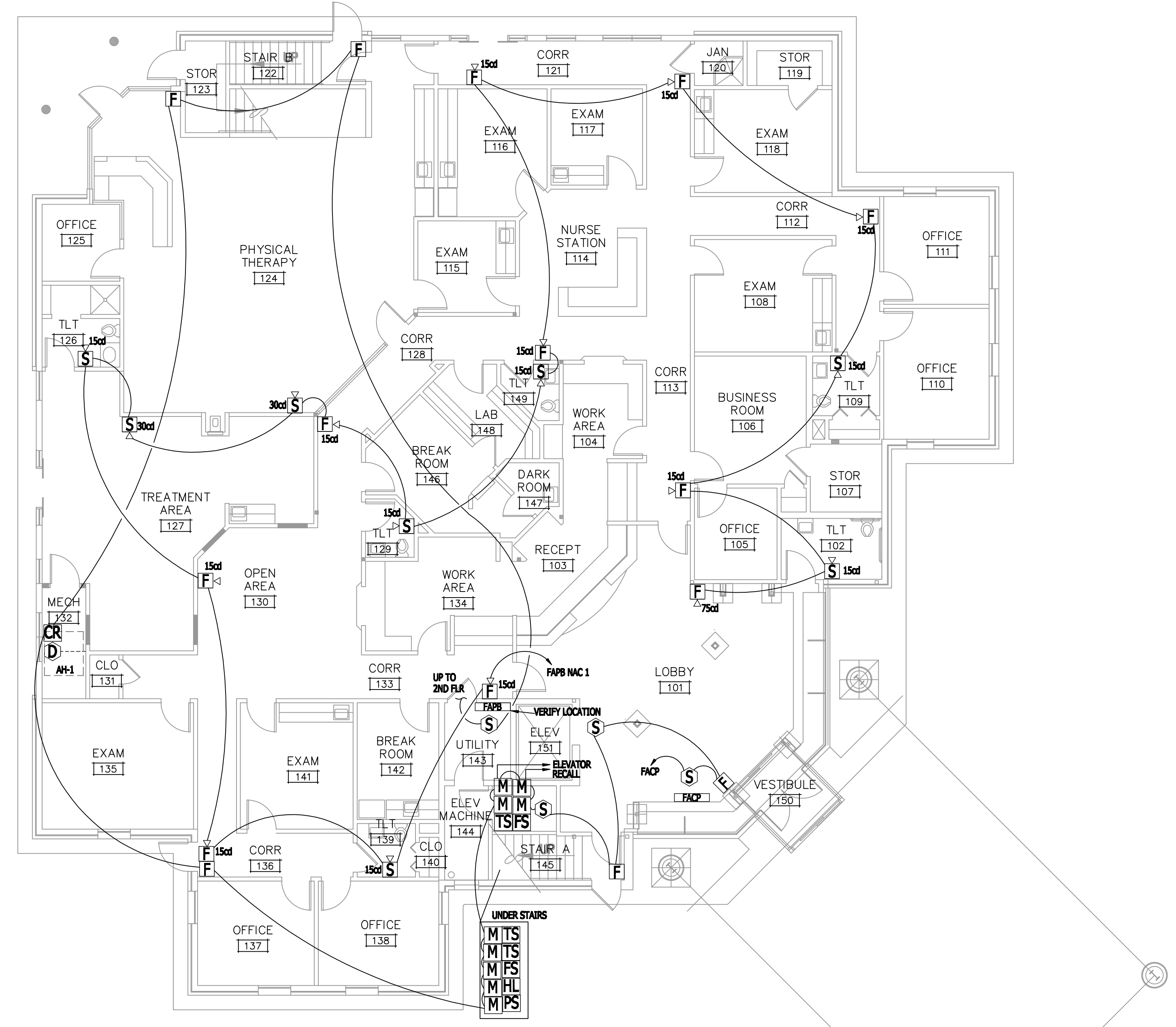
FA2

LEGEND

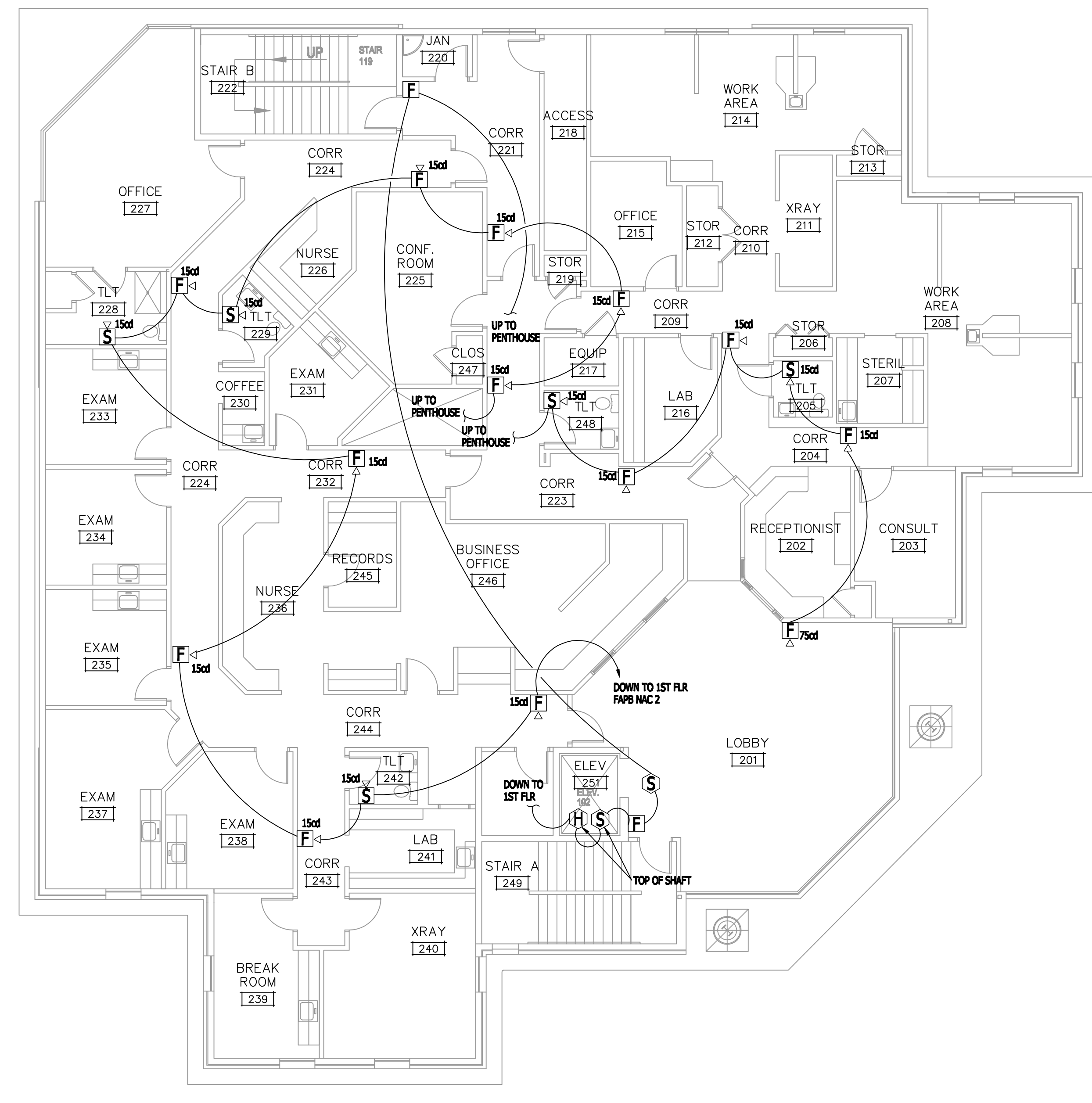
- | | |
|--------------------------------------|--|
| F PULL STATION | TS TAMPER SWITCH |
| D DUCT DETECTOR (BY OTHERS) | FS FLOW SWITCH |
| FACP FIRE ALARM CONTROL PANEL | HL HI/LO PRESSURE SWITCH |
| FAPB FIRE ALARM POWER BOOSTER | M MONITOR MODULE |
| S SMOKE DETECTOR | CR CONTROL RELAY MODULE |
| H HEAT DETECTOR | PS PRESSURE SWITCH |
| F HORN/STROBE DEVICE | PIV POST INDICATOR VALVE |
| S STROBE DEVICE | CR6 CONTROL RELAY MODULE (6 ZONE) |



3 HVAC PENTHOUSE FIRE ALARM PLAN
FA2 1/8"=1'0"



1 1ST FLOOR FIRE ALARM PLAN
FA2 1/8"=1'0"



2 2ND FLOOR FIRE ALARM PLAN
FA2 1/8"=1'0"