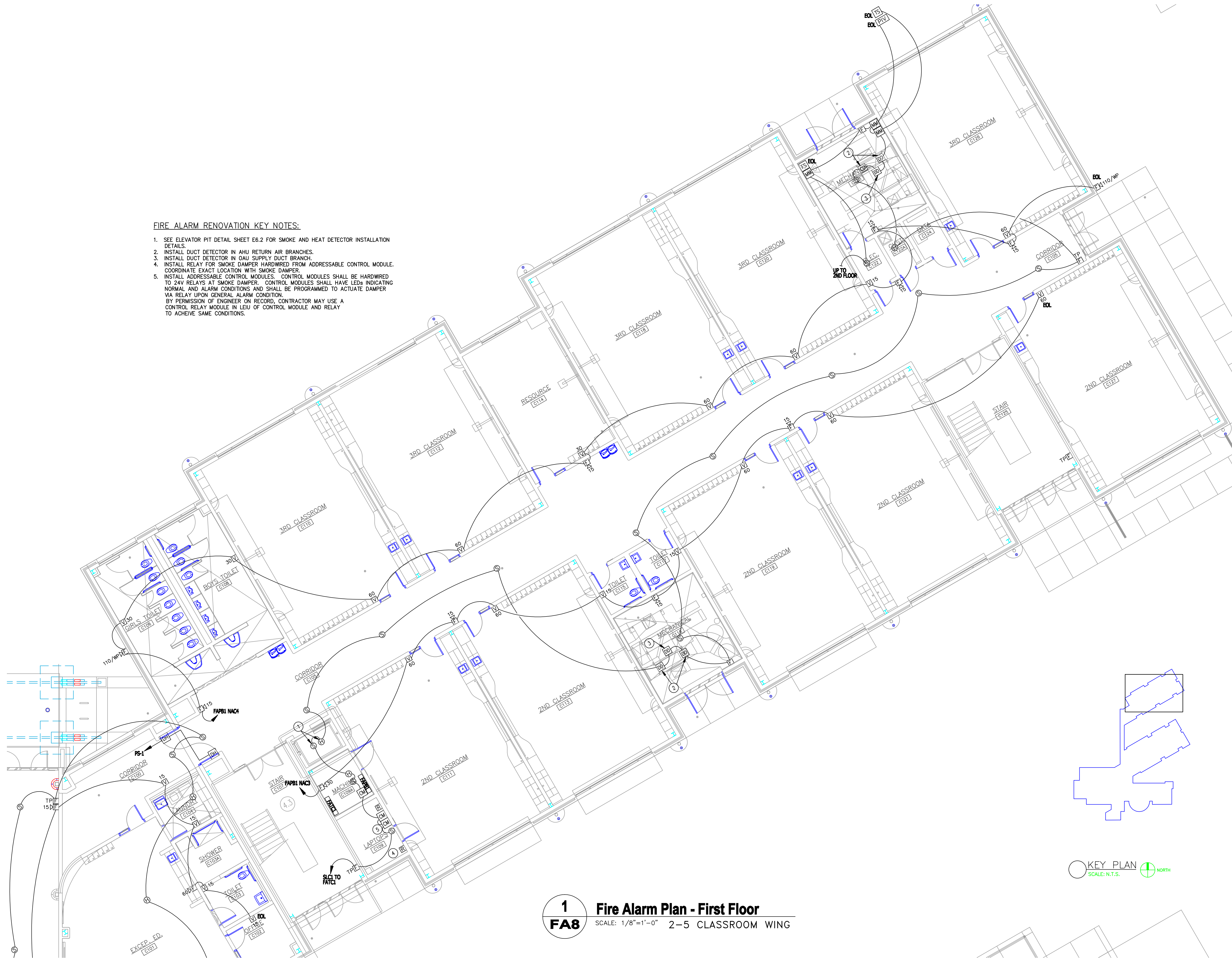


FIRE ALARM RENOVATION KEY NOTES:

1. SEE ELEVATOR PIT DETAIL SHEET E6.2 FOR SMOKE AND HEAT DETECTOR INSTALLATION DETAILS.
2. INSTALL DUCT DETECTOR IN AHU RETURN AIR BRANCHES.
3. INSTALL DUCT DETECTOR IN OAU SUPPLY DUCT BRANCH.
4. INSTALL RELAY FOR SMOKE DAMPER HARDWIRED FROM ADDRESSABLE CONTROL MODULE. COORDINATE EXACT LOCATION WITH SMOKE DAMPER.
5. INSTALL ADDRESSABLE CONTROL MODULES. CONTROL MODULES SHALL BE HARDWIRED TO 24V RELAYS AT SMOKE DAMPER. CONTROL MODULES SHALL HAVE LEDs INDICATING NORMAL AND ALARM CONDITIONS AND SHALL BE PROGRAMMED TO ACTUATE DAMPER VIA RELAY UPON GENERAL ALARM CONDITION.
 BY PERMISSION OF ENGINEER ON RECORD, CONTRACTOR MAY USE A CONTROL RELAY MODULE IN LEIU OF CONTROL MODULE AND RELAY TO ACHIEVE SAME CONDITIONS.



1
FA8 Fire Alarm Plan - First Floor
 SCALE: 1/8"=1'-0" 2-5 CLASSROOM WING

Drawing Title	FLOOR PLAN		Date
	Proj. No.	10-102-31	
Proj. Date		Drawn By	DWR
Revisions		Scale	N/A
		Date	5-12-10

Job: Durham Elem. School - E
 1470 Old Oxford Rd
 DURHAM, NC
 Contractor: